

Vincent R. Nitz, *President*
James M. Leppek, *Sales & Engineering*

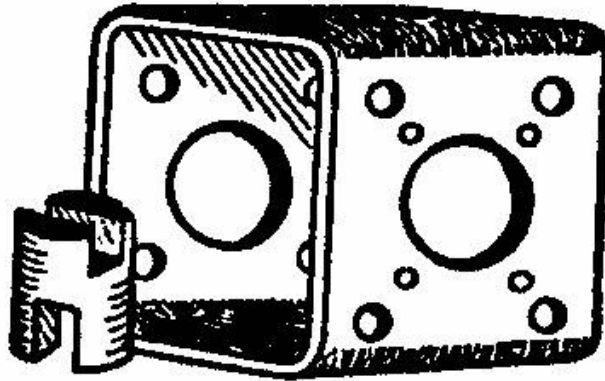
Phone: (989) 883-9500
Fax: (989) 883-2772
Website: www.nitzvalve.com
E-mail: nvh@nitzvalve.com
nvhsales@nitzvalve.com

Direct e-mail:
vrnitz@nitzvalve.com
jlepek@nitzvalve.com



Nitz Valve Hardware, Inc.

Leaders in Valve Automation Adaptation Hardware

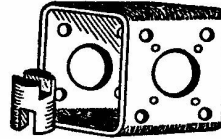


Price List January 1, 2011

8625 Unionville Rd. (M-25) - P.O. Box 654 Sebawaing, MI 48759-0654

NITZ VALVE HARDWARE, INC.

Vincent R. Nitz, *President*



Memo

TO: CUSTOMERS

FROM: Vincent R. Nitz, President
NITZ VALVE HARDWARE, INC.

RE: Price List - Effective January 1, 2011

Enclosed please find our new price book for actuator and accessory mounting kits. Our pricing has changed due to the rising costs of production and raw materials.

Please note our part number designation chart on page 9. This part number system has been incorporated for your tracking & reordering convenience. When reordering mounting kits, please include a complete application description, part number, and past PO# whenever possible. For additional explanation of part number designations, please contact our sales staff.

We have also inserted valve dimension spec. sheets, (pages 10 through 13) for your use should you have to specify the dimensions directly from a valve. Make copies of these sheets as needed and you can fax these to us for our use in the design process of your mounting kits. These sheets display the basic dimensions we will need for the design process. Please note that you may need to incorporate two or more sheets to correctly describe the mounting of your valve. Please call our sales staff for any assistance in using these sheets.

We appreciate your continued business and will be working to provide the very best service and quality for your future requirements.

8625 Unionville Rd. - - P.O. Box 654 Sebewaing, MI 48759-0654

(989) 883-9500 Fax (989) 883-2772

PRICE LIST FOR MOUNTING KITS

Product	Page
BUTTERFLY VALVES.....	4
BALL & PLUG VALVES.....	5
STEM EXTENSION KITS.....	6
3-WAY LINKAGE KITS.....	7
LIMIT SWITCHES.....	8
POSITIONERS.....	8
PART NUMBER DESIGNATION CHART.....	9
DIMENSION SPEC. SHEETS.....	10-13
SAMPLE DRAWINGS.....	14-16

PRICE LIST

PRICE INCLUDES

- Carbon Steel Bracket/Coupling
 - Completely Deburred
 - Primed
 - Painted
 - Fasteners
-

OPTIONAL SERVICES (Additional Cost)

- Special Mounting
(No mounting facility)
Add 20% to List
- Stainless Steel Material POA
- **EXPEDITED SERVICE**
PER KIT DESIGN
3 working days \$70.00
7 working days \$30.00

**NO QUANTITY DISCOUNTS
AVAILABLE ON EXPEDITED ORDERS**

Prices shown are net - Quantity 1 - 5 pieces

Quantity Discounts per Design *

6 - 20 list price less 5%

21 - 50 list price less 10%

51 -? list price less 15%

*** NO QUANTITY DISCOUNTS
AVAILABLE ON RAPID SERVICE**

Terms

F.O.B - Sebewaing, Michigan

NOTES:

1. NITZ VALVE HARDWARE, INC. will not be responsible for incorrect dimensional data supplied by customer.
2. Prices based on standard assemblies. NITZ VALVE HARDWARE, INC. reserves the right to add charges on oversized/"special" mounting configurations.
3. All mounting/adaptor kits not listed are Price On Availability (POA).

MOUNTING KIT PRICE FOR BUTTERFLY VALVES

- ☛ All High Performance BFV - POA
- ☛ 24" and Larger POA
- ☛ Damper BFV POA

ACTUATOR EXAMPLES*	2" thru 6"	8" thru 12"	14" thru 20"
RCI, Bettis (Male Output)	\$74.00	\$93.00	\$228.00
Bray, Automax (Female "DD")	\$74.00	\$93.00	\$228.00
Elomatic, Valvcon, Radius, Valbia, Promation			
RCI, Hytork (ISO 5211)	\$74.00	\$93.00	\$228.00
Hills McCanna	\$74.00	\$93.00	\$228.00
Jamesbury	\$74.00	\$93.00	\$228.00
Matryx & Kinetrol			
Morin	\$74.00	\$93.00	\$228.00
RCS	\$74.00	\$93.00	\$228.00
Watts & Worcester	\$74.00	\$93.00	\$228.00

*Actuators that have blank drive nuts will have additional machining charges.

Example: Auma, Limitorque, RCEL, Rotork, EIM.

Prices indicated are for 150# class valves.

300# class valves and above are POA.

Oversized actuators due to low line pressure are POA.

****Kits for additional actuators are available.***

See page 9 for available kits and kit options.

NOTE: All actuators, which have 2 inch or larger female drives or 1.5 inch or larger male drives, are P.O.A.

Example: T series Bettis, H.D. series, Remote Control RC 80/100

MOUNTING KIT PRICE FOR BALL AND PLUG VALVES

☛ All high pressure or NON-ISO BV's -POA

ACTUATOR EXAMPLES*	1/4" -1"	1-1/4" - 2"	2-1/2"-4"	6"-8"
Bettis, RCI (Male Shaft)	\$71.00	\$74.00	\$125.00	\$228.00
Bray, Automax (Female "DD")	\$71.00	\$74.00	\$125.00	\$228.00
Elomatic, Valvcon, RCI, Radius, Valbia, Promation				
SVF, Hytork (ISO 5211)	\$71.00	\$74.00	\$125.00	\$228.00
Jamesbury	\$71.00	\$74.00	\$125.00	\$228.00
Matryx & Kinetrol, Morin	\$71.00	\$74.00	\$125.00	\$228.00
RCS	\$71.00	\$74.00	\$125.00	\$228.00
Watts & Worcester	\$71.00	\$74.00	\$125.00	\$228.00

*Actuators that have blank drive nuts will have additional machining charges.

Example: Auma, Limitorque, RCEL, Rotork, EIM.

Prices indicated are for 150# class valves.

300# class valves and above are POA.

Oversized actuators due to low line pressure are POA.

**Kits for additional actuators are available.*

See page 9 for available kits and kit options.

NOTE: All actuators, which have 2 inch or larger female drives or 1.5 inch or larger male drives, are P.O.A.

Example: T series Bettis, H.D. series, Remote Control RC 80/100

BUTTERFLY VALVE STEM EXTENSION KIT

VALVE SIZE	Up to 3' Length Face to Face	Price per Inch Over 3' Lengths
2" - 6"	\$247.00	\$3.75
8" - 12"	\$285.00	\$4.00
14" - 20"	\$420.00	\$7.75
24" - 36"	POA	POA

NOTES:

1. Industrial Butterfly Valves only; Hi-performance BFV - ADD 20%
2. AWWA BFV's, Plug and Ball Valves: POA

GEAR BOX HANDWHEEL STEM EXTENSION KIT

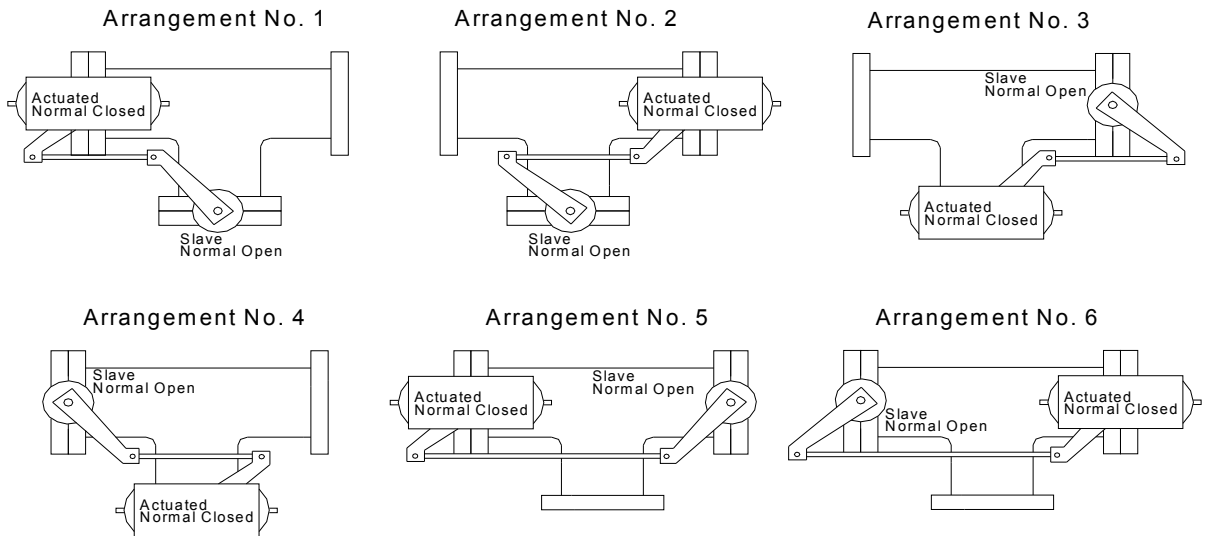
STEM DIAMETER	Up to 3' Length Pin to Pin	Price per Inch Over 3' Lengths
1/2" - 1"	\$130.00	\$1.90
LARGE DIAMETER	POA	POA

3- WAY BUTTERFLY LINKAGE KITS

- ☛ High Performance BFV - POA
- ☛ Ball Valves, Plug Valves, & Gate Valves - POA

2" thru 6"	8" thru 12"	14" thru 18"	20" thru 36"
\$300.00	\$392.00	\$514.00	POA

*Chain Drive Design with Guard
or
Linkage Arm Design*



THE ECONOMICAL ALTERNATIVE TO EXPENSIVE BALL VALVES

NOTE:

When ordering 3-ways, valve locations and actuator location must be defined.
When ordering, specify Chain or Linkage Arm Design.

ACCESSORIES

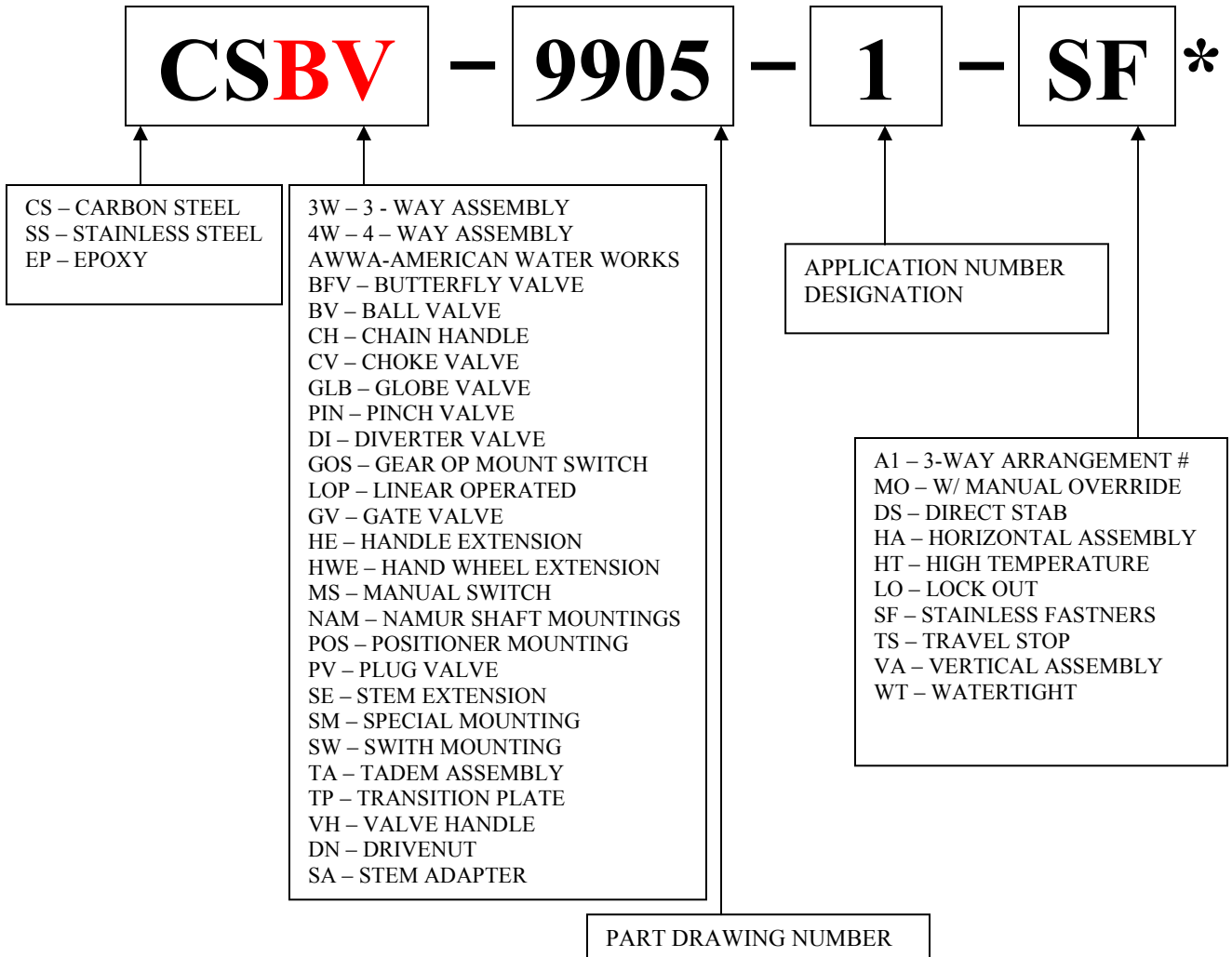
NON-NAMUR LIMIT SWITCH MOUNTING KITS*	Price
Mounting to Actuator	\$71.00
Lever Operated and Gear Box Mountings	POA

NON- NAMUR POSITIONER MOUNTING KITS*	Price
Accord	\$71.00
Bailey	\$71.00
Moore	\$71.00
Conameter	\$71.00
PMV	\$71.00
<i>(All Makes)</i>	

NAMUR BRACKET ONLY MOUNTING KITS*	Price
#1 Namur 80mm x 30mm mounting bolt hole pattern x 20mm pinion height	\$40.00
#2 Namur 130mm x 30mm mounting bolt hole pattern x 30mm pinion height	\$40.00

**Customer must supply application description when ordering accessory mounts.*

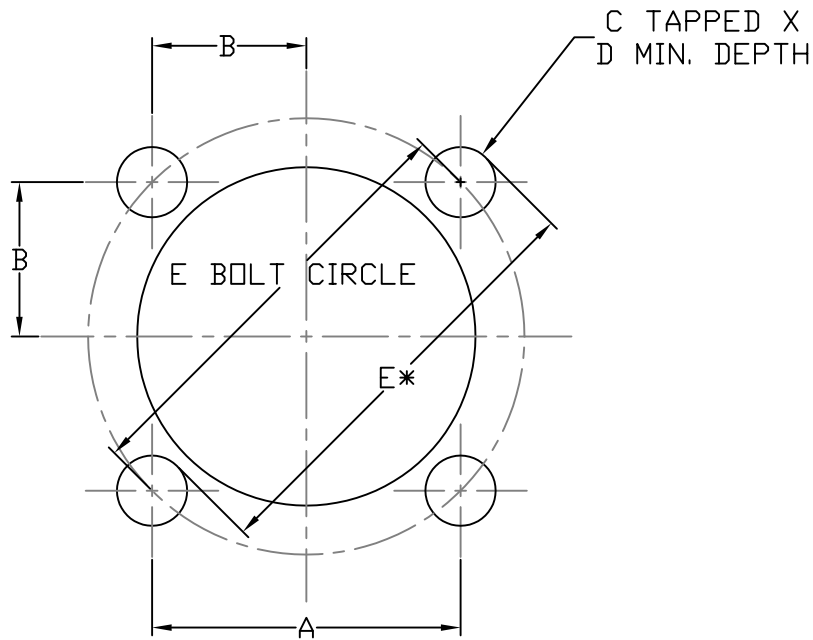
 SPECIALS
POA



When reordering your Nitz Valve Hardware mounting kits please take note of our new part number assignments. The part number will be included with the shipment of the mounting kits and should be kept record of for your reordering needs. Numbering system is subject to be revised to provide additional designations for mounting kits.

ISO MOUNTING PATTERNS

ISO TYPE	DIMENSIONS					
	A	B	C	D MIN.	E DIA.	# HOLES
F03	1.002	.501	10-24 / M5	.35	1.414	4
F04	1.170	.585	10-24 / M5	.35	1.656	4
F05	1.392	.696	1/4" / M6	.35	1.97	4
F07	1.948	.974	5/16" / M8	.47	2.756	4
F10	2.840	1.420	3/8" / M10	.59	4.02	4
F12	3.480	1.740	1/2" / M12	.71	4.92	4
F14	3.898	1.949	5/8" / M14	.94	5.51	4
F16	4.593	2.296	3/4" / M16	1.18	6.50	4
F25	7.070	3.535	5/8" / M14	.94	10.0	8
F30	8.295	4.147	3/4" / M16	1.18	11.73	8
F35	9.909	4.955	M30	1.77	14.01	8
F40	11.301	5.650	M36	2.13	15.98	8
F48	13.444	6.722	M36	2.13	19.01	12
F60	16.784	8.392	M36	2.13	23.74	20



***NOTE:**

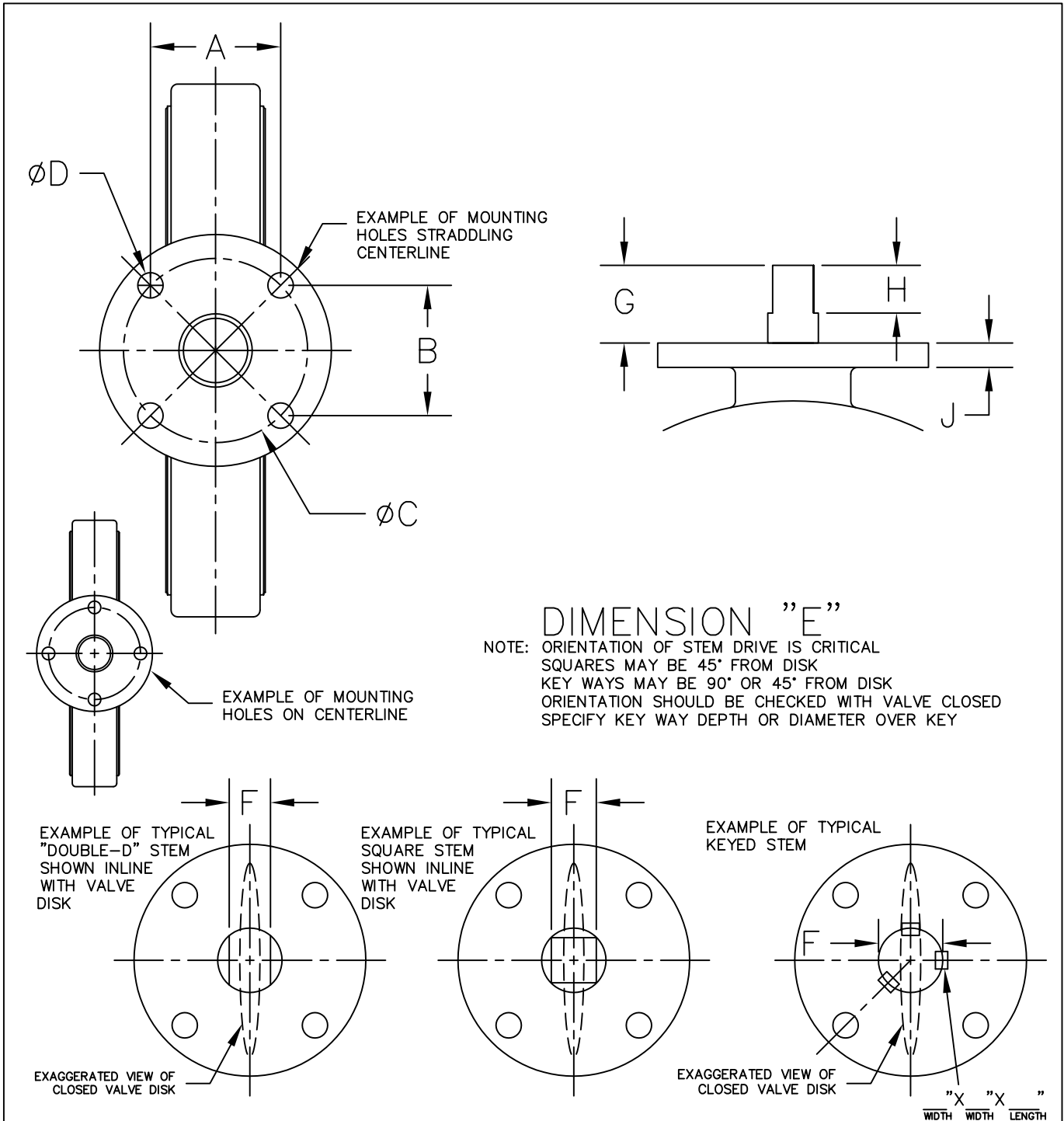
DIMENSION "E" IS MOST EASILY MEASURED FROM THE EDGE OF ONE HOLE TO THE OPPOSITE EDGE ACROSS CENTERLINE AS SHOWN IN THE DRAWING ABOVE.

THIS DOCUMENT AND THE DATA DISCLOSED HEREIN OR HEREWITH IS NOT TO BE REPRODUCED, USED OR DISCLOSED IN WHOLE OR IN PART TO ANYONE WITHOUT THE EXPRESSED WRITTEN PERMISSION OF NITZ VALVE HARDWARE INC.

Nitz Valve Hardware Inc.

ISO 5211 STANDARD DIMENSION CHART

DRAWN BY: J.LEPPEK	SIZE	DWG NO. ISODIMS	PART NO. -	REV -
APPROVED BY: V.NITZ	SCALE NONE	SHEET 1 OF 1		



DIMENSION "E"

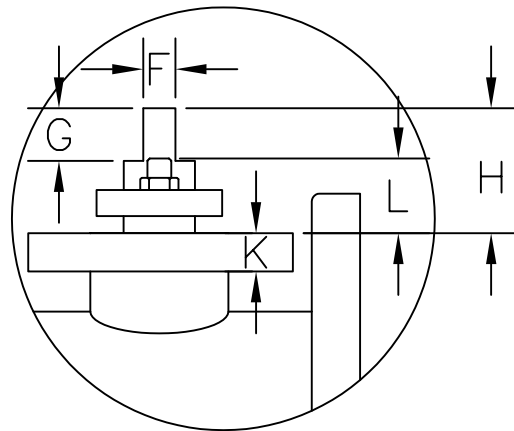
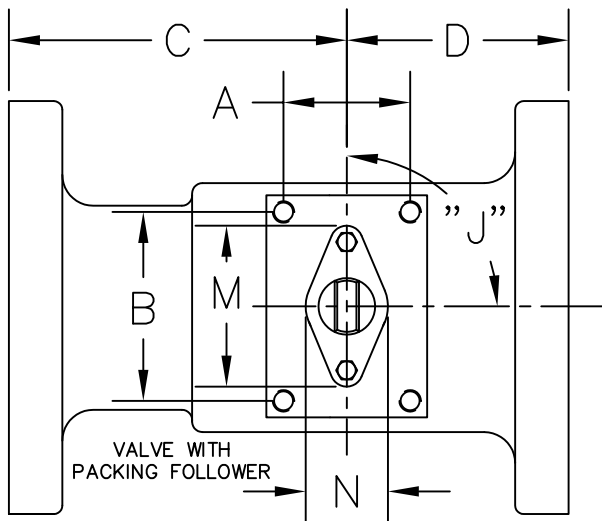
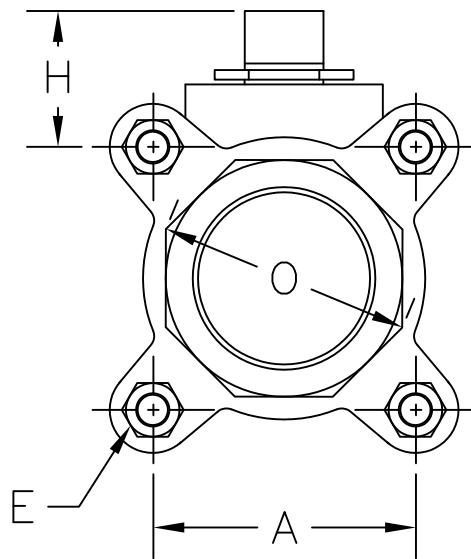
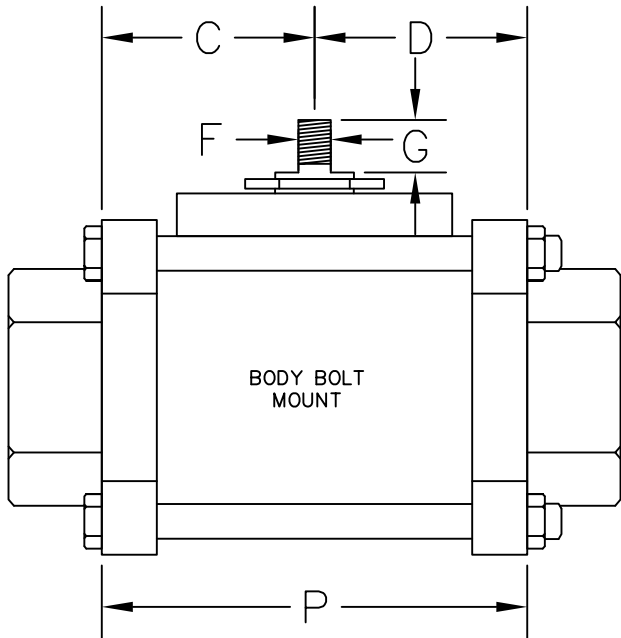
NOTE: ORIENTATION OF STEM DRIVE IS CRITICAL
 SQUARES MAY BE 45° FROM DISK
 KEY WAYS MAY BE 90° OR 45° FROM DISK
 ORIENTATION SHOULD BE CHECKED WITH VALVE CLOSED
 SPECIFY KEY WAY DEPTH OR DIAMETER OVER KEY

VALVE SIZE: _____ VALVE MANUFACTURER: _____ VALVE MODEL OR SERIES: _____

BOLT PATTERN			THRU HOLE OR THREAD	STEM ORIENTATION	STEM DETAIL	STEM HEIGHT	USABLE FLAT	FLANGE THICKNESS	IMPORTANT NOTES: ANY OBSTRUCTIONS SUCH AS HANDLE STOPS, PACKING GLANDS, FLANGES THAT EXTEND ABOVE MOUNTING PAD, ETC. THAT WOULD INTERFERE WITH MOUNTING BRACKET SHOULD BE NOTED AND SPECIFIED ACCORDINGLY. STEM DIMENSIONS ARE CRITICAL AND ARE TO BE MEASURED WITHIN ±.001 FOR PROPER MACHINING OF COUPLERS. BOLT MOUNTING PATTERNS MAY BE RECTANGULAR AND SHOULD BE SPECIFIED USING A & B DIMS. ANY VALVE DIMENSIONS SPECIFIED ARE THE RESPONSIBILITY OF THE PERSONS THEREIN AND MOUNTING KITS WILL BE MADE TO THOSE DIMENSIONS.
A	B	C	D	E	F	G	H	J	

NITZ VALVE HARDWARE INC. 8625 UNIONVILLE RD. SEBEWAING, MI 48759
 TEL: (989) 883-9500 FAX: (989) 883-2772

BUTTERFLY VALVE DIMENSION SPEC SHEET REV.082704 DWG FILE: BFVSPEC



DIMENSION "J"

NOTE: ORIENTATION OF PACKING FOLLOWER MAY BE INLINE, 45°, OR 90° FROM FLOW SPECIFY USING DIM. "I"

VALVE SIZE: _____ VALVE MANUFACTURER: _____ VALVE MODEL OR SERIES: _____

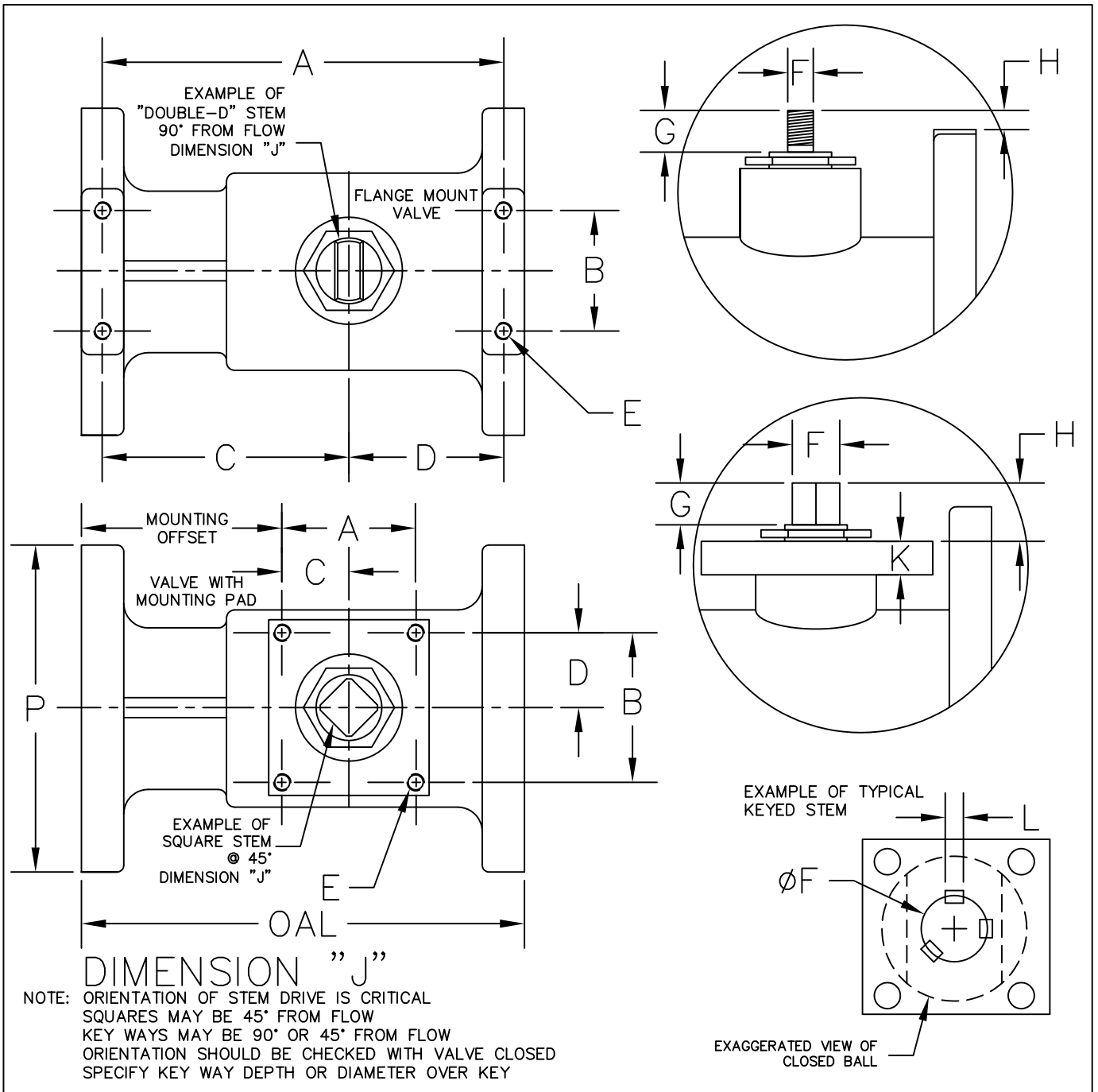
IMPORTANT NOTES:	BOLT PATTERN		STEM OFFSET		THRU HOLE OR THREAD	STEM DETAIL	USABLE FLAT	STEM HEIGHT	PACKING ORIENTATION	FLANGE THICKNESS	STUD HEIGHT	PACKING LENGTH	PACKING WIDTH	Ø OVER CORNERS	BODY WIDTH
	A	B	C	D	E	F	G	H	J	K	L	M	N	O	P

ANY OBSTRUCTIONS SUCH AS HANDLE STOPS, PACKING GLANDS, FLANGES THAT EXTEND ABOVE MOUNTING PAD, ETC. THAT WOULD INTERFERE WITH MOUNTING BRACKET SHOULD BE NOTED AND SPECIFIED ACCORDINGLY. STEM DIMENSIONS ARE CRITICAL AND ARE TO BE MEASURED WITHIN ±.001 FOR PROPER MACHINING OF COUPLERS. BOLT MOUNTING PATTERNS MAY BE RECTANGULAR AND SHOULD BE SPECIFIED USING A & B DIMS. ANY VALVE DIMENSIONS SPECIFIED ARE THE RESPONSIBILITY OF THE PERSONS THEREIN, MOUNTING KITS WILL BE MADE TO THOSE DIMENSIONS.

NITZ VALVE HARDWARE INC.

8625 UNIONVILLE RD. SEBEWAING, MI 48759
 TEL: (989) 883-9500 FAX: (989) 883-2772

VALVE DIMENSION SPEC SHEET REV.082704 DWG FILE: BVSPEC



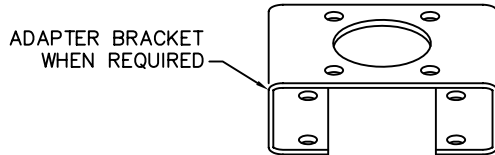
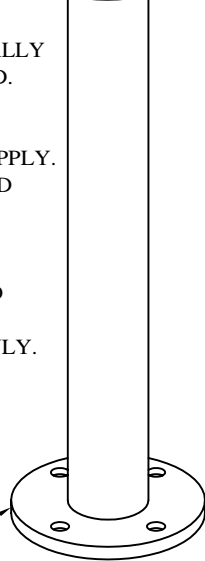
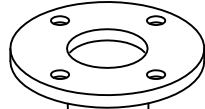
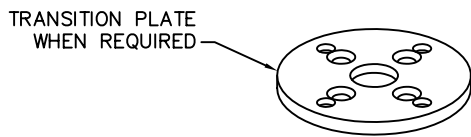
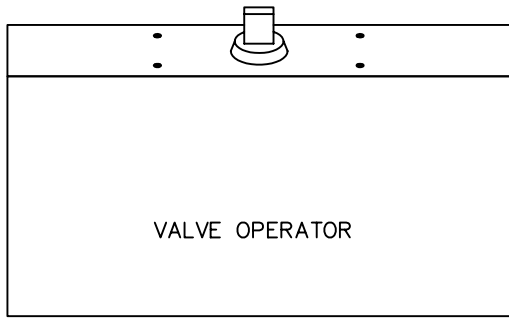
VALVE SIZE: _____ VALVE MANUFACTURER: _____ VALVE MODEL OR SERIES: _____

IMPORTANT NOTES:	BOLT PATTERN		STEM OFFSET		THRU HOLE OR THREAD	STEM DETAIL	USABLE FLAT	STEM HEIGHT	STEM ORIENTATION	FLANGE THICKNESS	KEY SIZE
	A	B	C	D	E	F	G	H	J	K	L
											"X" "X" " WIDTH WIDTH LENGTH

ANY OBSTRUCTIONS SUCH AS HANDLE STOPS, PACKING GLANDS, FLANGES THAT EXTEND ABOVE MOUNTING PAD, ETC. THAT WOULD INTERFERE WITH MOUNTING BRACKET SHOULD BE NOTED AND SPECIFIED ACCORDINGLY. STEM DIMENSIONS ARE CRITICAL AND ARE TO BE MEASURED WITHIN ±.001 FOR PROPER MACHINING OF COUPLERS. BOLT MOUNTING PATTERNS MAY BE RECTANGULAR AND SHOULD BE SPECIFIED USING A & B DIMS. ANY VALVE DIMENSIONS SPECIFIED ARE THE RESPONSIBILITY OF THE PERSONS THEREIN, MOUNTING KITS WILL BE MADE TO THOSE DIMENSIONS.

NITZ VALVE HARDWARE INC. 8625 UNIONVILLE RD. SEBEWAING, MI 48759
 TEL: (989) 883-9500 FAX: (989) 883-2772

REVISIONS				
ZONE	REV	DESCRIPTION	DATE	APPROVED



INNER
DRIVE
SHAFT



THRUST BEARING
WHEN REQUIRED

NOTE:
TOP OF STEM EXTENSIONS WILL NORMALLY
DUPLICATE THE VALVE MOUNTING PAD.
A BRACKET WILL BE REQUIRED UNDER
THE EXTENSION FOR PACKING GLAND
OR WHEN OTHER CLEARANCE ISSUES APPLY.
A TRANSITION PLATE WILL BE REQUIRED
ON THE EXTENSION WHEN PIPE O.D.
EXCEEDS THE BOLT PATTERN ON
EITHER THE TOP, BOTTOM, OR BOTH.
THRUST BEARINGS ARE RECOMMENED
FOR HEAVY OR LONG INNER DRIVES.
ACTUATOR SHOWN FOR REFERENCE ONLY.

THIS DOCUMENT AND THE DATA
DISCLOSED HEREIN OR HEREWITH
IS NOT TO BE REPRODUCED, USED
OR DISCLOSED IN WHOLE OR IN
PART TO ANYONE WITHOUT THE
EXPRESSED WRITTEN PERMISSION OF
NITZ VALVE HARDWARE INC.

Nitz Valve Hardware Inc.

STEM EXTENSION
MOUNTING LINKAGE

DRAWN BY: **J.LEPPEK**

SIZE DWG NO.
55STEXT

PART NO.

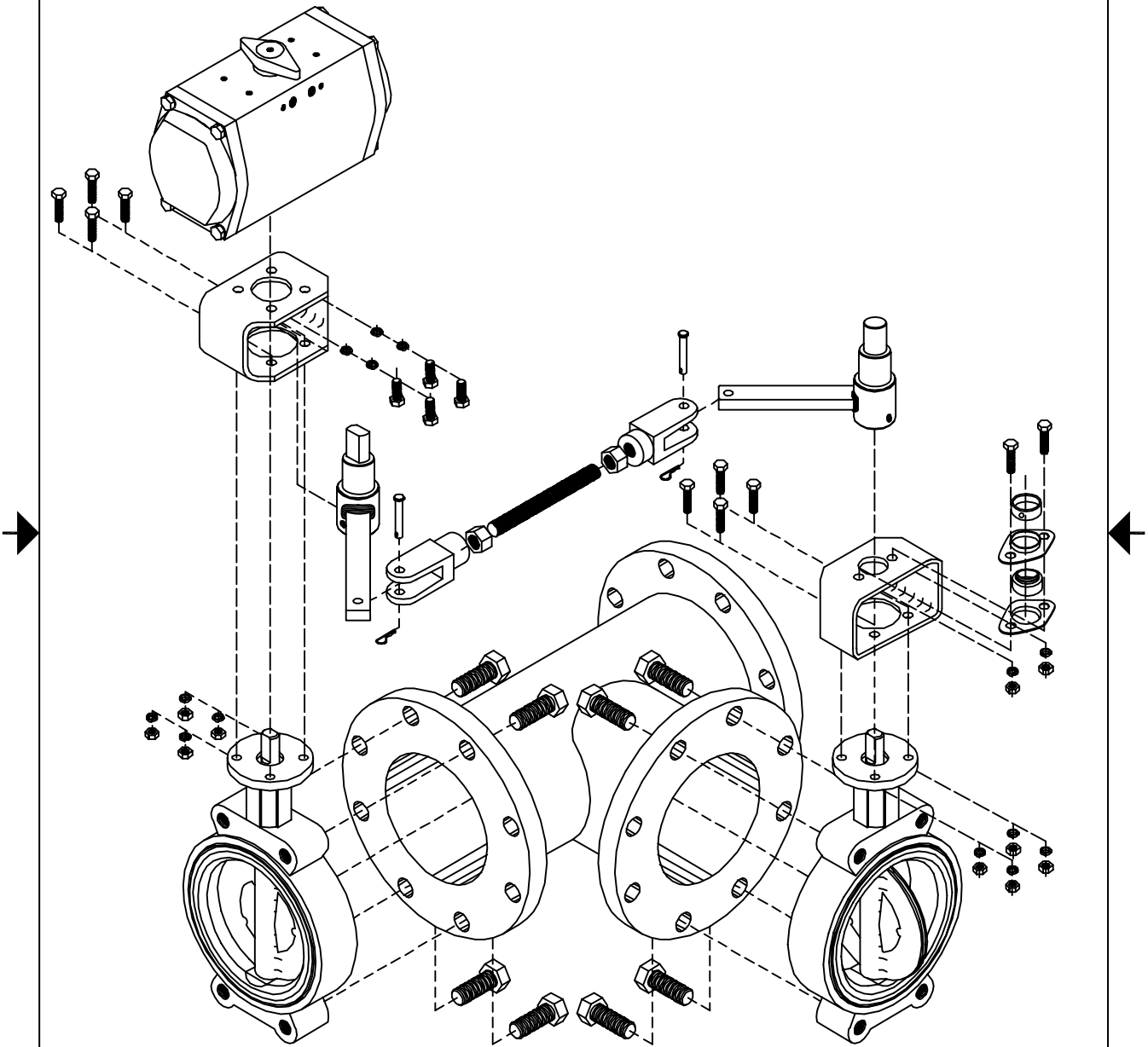
REV
-

APPROVED BY: **V.NITZ**

SCALE NONE

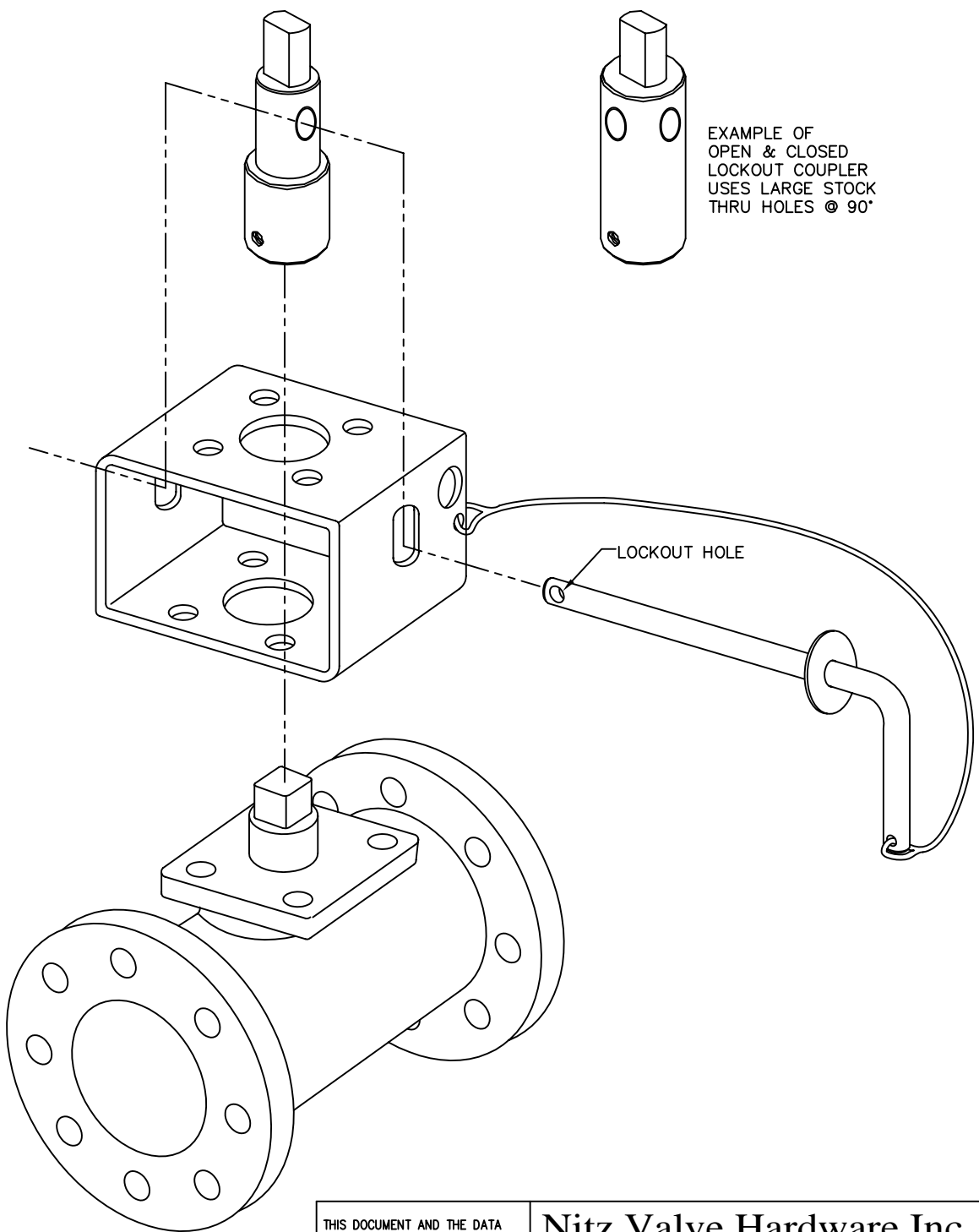
SHEET 1 OF 1

REVISIONS				
ZONE	REV	DESCRIPTION	DATE	APPROVED



THIS DOCUMENT AND THE DATA DISCLOSED HEREIN OR HEREWITH IS NOT TO BE REPRODUCED, USED OR DISCLOSED IN WHOLE OR IN PART TO ANYONE WITHOUT THE EXPRESSED WRITTEN PERMISSION OF NITZ VALVE HARDWARE INC.		Nitz Valve Hardware Inc.		
3 WAY ASSEMBLY EXPLODED VIEW ARRANGEMENT #1 SHOWN				
DRAWN BY: J.LEPPEK	SIZE 6523WAR2	PART NO.	REV -	
APPROVED BY: V.NITZ	SCALE NONE	SHEET 1 OF 1		

REVISIONS				
ZONE	REV	DESCRIPTION	DATE	APPROVED



THIS DOCUMENT AND THE DATA DISCLOSED HEREIN OR HEREWITH IS NOT TO BE REPRODUCED, USED OR DISCLOSED IN WHOLE OR IN PART TO ANYONE WITHOUT THE EXPRESSED WRITTEN PERMISSION OF NITZ VALVE HARDWARE INC.

Nitz Valve Hardware Inc.
 STANDARD LOCKOUT DESIGN
 MOUNTING LINKAGE

DRAWN BY: J.LEPPEK	SIZE	DWG NO. 54LOEX	PART NO.	REV -
APPROVED BY: V.NITZ	SCALE NONE	SHEET 1 OF 1		